

©

THIS DRAWING IS CONFIDENTIAL AND THE COPYRIGHT OF COOPER (U.K.) LIMITED AND MUST NOT BE COPIED OR PASSED ON TO A THIRD PARTY WITHOUT WRITTEN CONSENT.



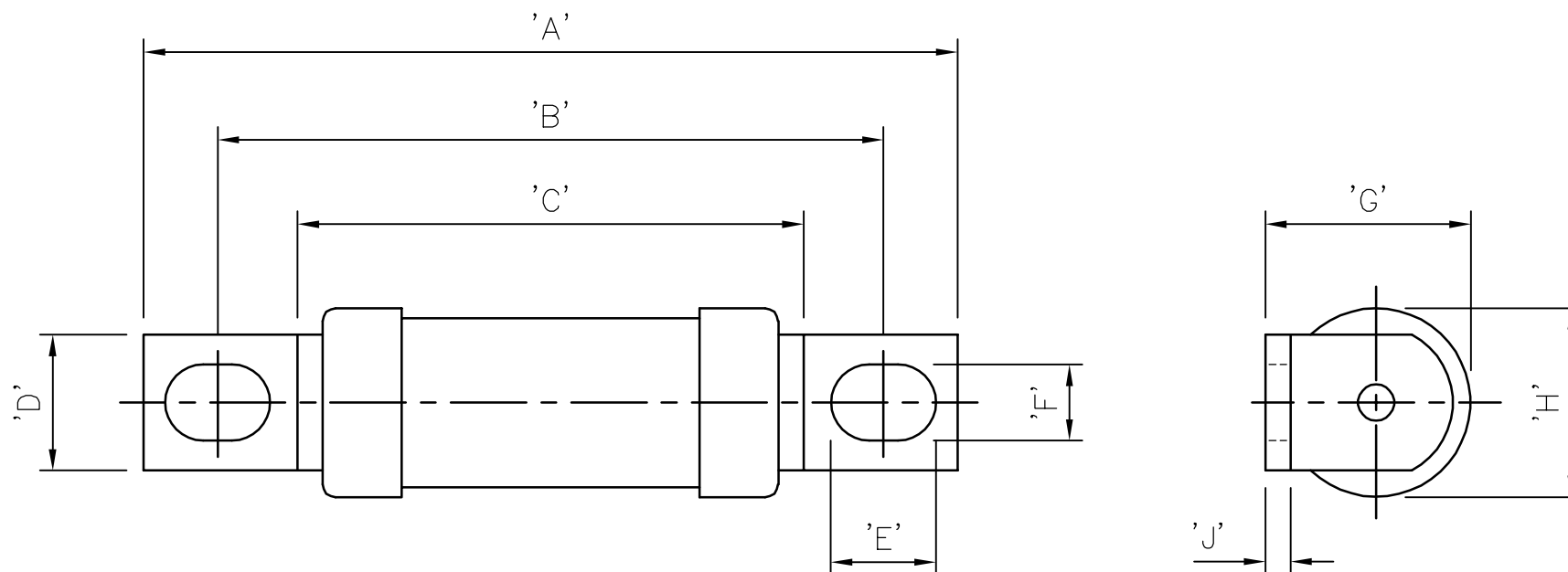
UNCONTROLLED COPY

PLEASE ENSURE THE DRAWING IS TO THE LATEST REVISION BEFORE COMMENCING WORK.

DRG. No. E5795006

REVISIONS

A) type MT added
24 Feb 98
NPMN

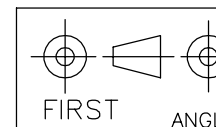


IF IN DOUBT ASK

FUSE REF.	RATING V ac/dc	DIM.'A'	DIM.'B'	DIM.'C'	DIM.'D'	DIM.'E'	DIM.'F'	DIM.'G'	DIM.'H'	DIM.'J'
6-20LCT	240/150	46.0	37.5	28.5	6.3	5.5	4.0	8.7	8.3	0.8
7-180LET		55.0	41.5	26.5	12.7	9.8	7.1	19.1	17.6	2.3
160-450LMT		83.5	58.2	31.0	25.4	13.5	10.3	41.3	38.1	3.2
6-20CT 6-20 FC	660/450	72.5	64.0	55.0	6.3	5.5	4.0	8.7	8.3	0.8
8-80ET, 35-100FE		76.0	62.0	47.0	12.7	9.8	7.1	19.1	17.6	2.3
180-350FM		112.0	84.0	49.5	25.4	14.0	10.3	41.3	38.1	3.2
160 - 355 MT		113.0	85.0	59.0	25.4	13.5	10.3	41.3	38.1	3.2

ACAD 12

DRN.	RJA	CHKD.
DATE	20.09.95	



FIRST ANGLE

NTS SCALE

Cooper (U.K.) Ltd
BURTON-ON-THE-WOLDS,
LEICESTERSHIRE LE12 5TH.
FAX 01509 882786
TEL 01509 882600

ALL DIMENSIONS IN MILLIMETRES UNLESS OTHERWISE STATED

DRG. No. E5795006

ANY UNSPECIFIED TOL.
± 0.4mm 0.016"

OUTLINE FOR BS88:Pt4:1988 FUSES



Bussmann

British Range Types FC, FE, FM, F4M

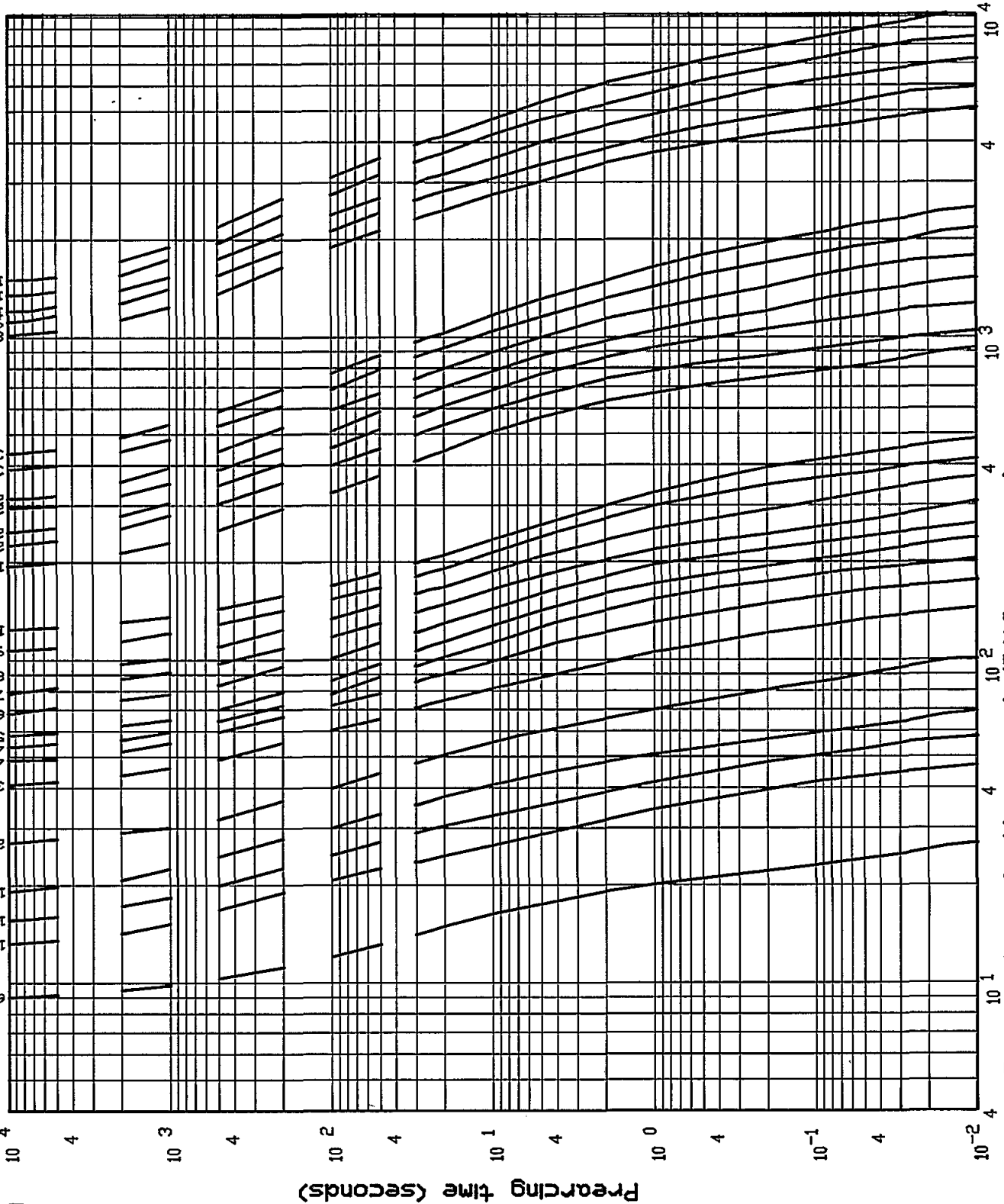
DRG No. 5781637
DATE SEPT 1988

1250F 4M
1100F 4M
1000F 4M
900F 4M
800F 4M

350FM
315FM
280FM
250FM
220FM
200FM
190FM

100FE
90FE
80FE
71FE
63FE
56FE
49FE
40FE
35FE

20FC
16FC
12FC
10FC
6FC



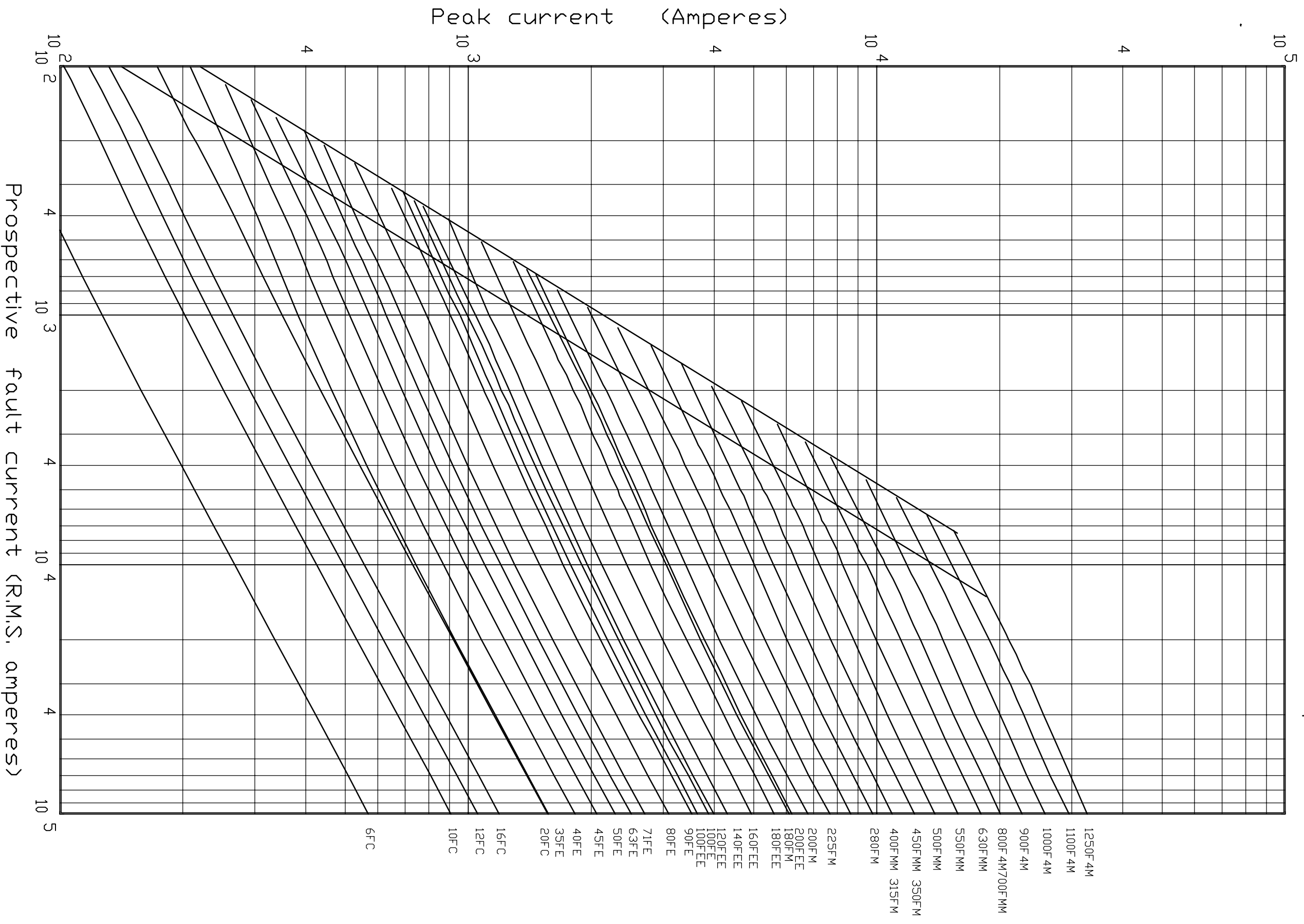
Prospective fault current (R.M.S. amperes)



Bussmann

Cut-off curve British 'F' range

DRG No. 5781635 DATE Sept 1988



Prospective fault current (R.M.S. amperes)

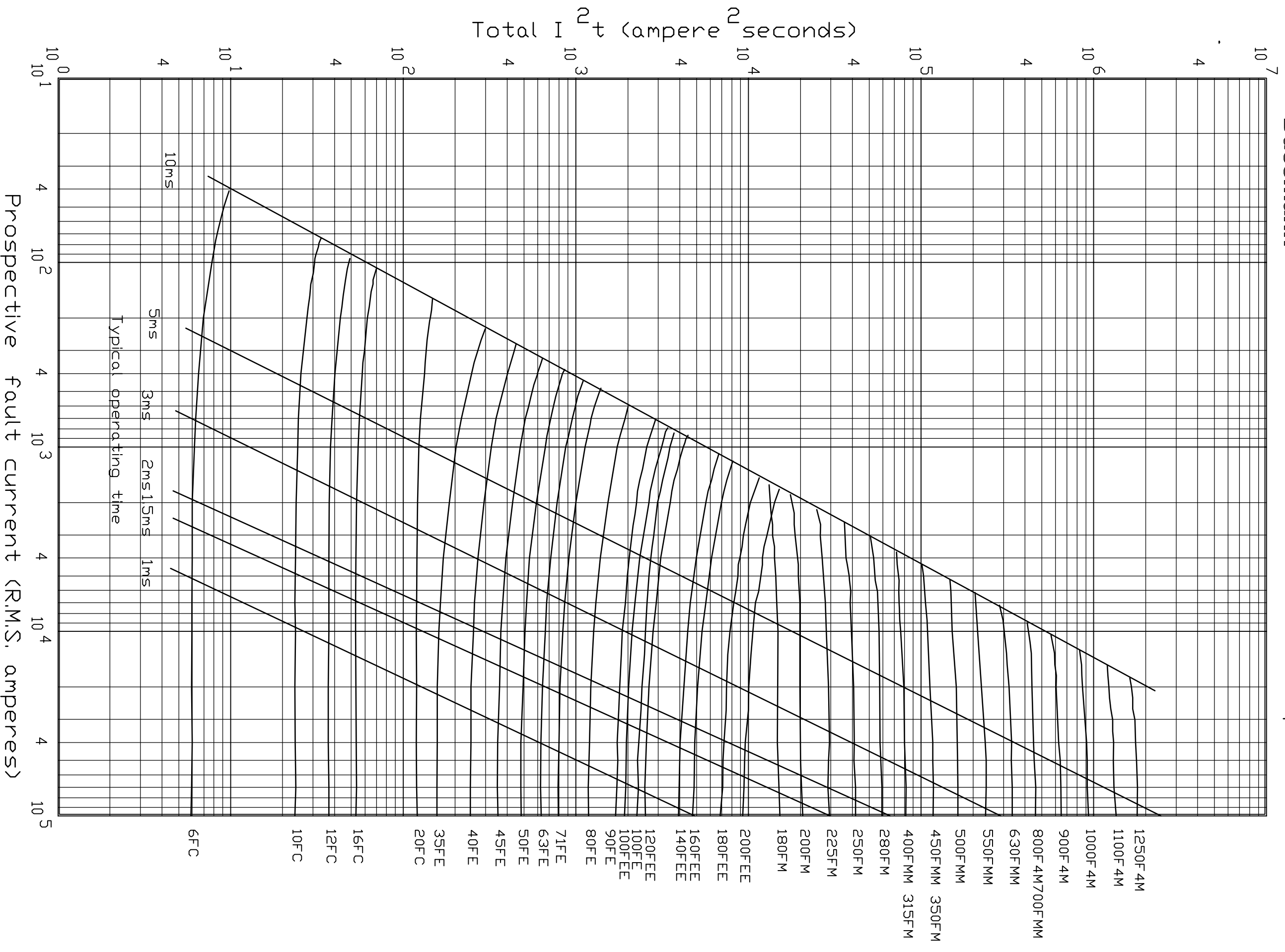


Total I²t 660V British 'F' range

Bussmann

DRG No. 5781641

DATE Sept 1988



Prospective fault current (R.M.S. amperes)